

Initial Pairing Instructions for Bluetooth® Keyboard to Windows 7

A Bluetooth dongle may be needed if it is not built into the host device.

1. Find and select the Bluetooth icon in lower right notification tray. (Figure 1)
2. Right click on the Bluetooth icon. Select 'Add a Device' from the list of options. (Figure 2)

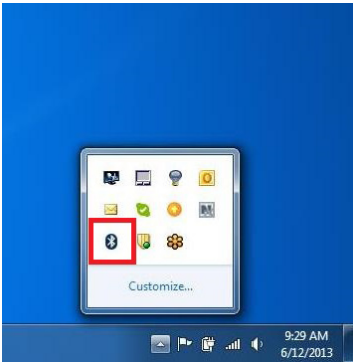


Figure 1

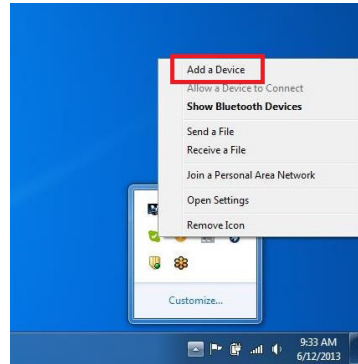


Figure 2

3. Scan the following code to enable your CR2600 to be discoverable by Windows 7.

Note: Once the reader is in discoverable mode, it will beep 2 times. You will have 30 seconds to initiate connection to host device. If 30 seconds elapses without connecting to host device, repeat steps 1-3.

Bluetooth Keyboard Discoverable Mode



4. You will see your Code reader as a device option on the 'Add a Device' window. Select your CR2600 device. (Figure 3)
5. Once the CR2600 device has been selected, a screen will appear containing a PIN. (Figure 4)

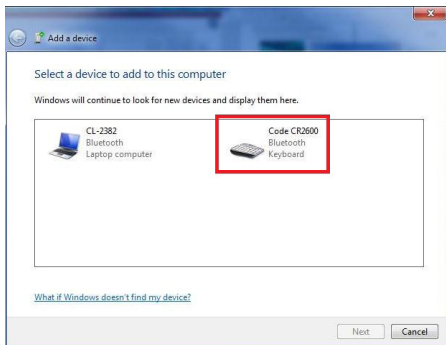


Figure 3



Figure 4

- When the reader beeps 2 times, it is ready for the entry of the PIN. Using the PIN Reference Codes, scan each of the PIN digits with your CR2600. You will have 30 seconds to enter the PIN. Scan 'Submit PIN' when pin sequence has been entered.

Note: failure to complete PIN entry in the allotted 30 seconds will result in the appearance of the 'Try Again' button. Press the 'Try Again' button and repeat steps 3-6.












- Once the installation of the Code CR2600 driver is completed, a 'this device has been successfully added to this computer' window will appear if PIN was entered correctly. (Figure 5)



Figure 5

- Reader will beep once and wireless icon LED will remain solid when successfully connected.
- To test connection, open 'notepad' and scan codes. If data appears on notepad after each scan, you have successful connected to Windows 7. If notepad is not showing scanned data, remove the BT device from the Bluetooth device screen and repeat steps 1-7. Contact Code's Application Engineering team for support at support@codecorp.com

PIN Reference Codes

0	1	2	3
 M10271_01	 M10262_01	 M10263_01	 M10264_01
4	5	6	7
 M10265_01	 M10266_01	 M10267_01	 M10268_01
8	9	Submit PIN	
 M10269_01	 M10270_01	 M10272_01	